

UNIVERSITY OF KANSAS

Conservation Services Treatment Database Fields

(Library and Archives Conservation)

2021

Some fields are for text; others have drop-down choices (multiple choices allowed)

1. Bibliographic data

Microsoft Access key ID #

Circulation call slip #

Call number

Author/creator

Title

Date of production

Approx. dimensions (H, W, Th, in cm)

Substrate thickness (cm)

Format (bound, flat)

Barcode #

Accompanying materials

2. Treatment overview

Lab treatment number

Curator

Collection division

Conservator (drop-down list)

Date examined

Date in

Date out

Selection method (exhibition review, curator-targeted, patron use, processing, etc.)

Priority (rush, regular workflow, low)

Photodocumentation (Networked drive; no photodoc; other)

Estimated treatment

Actual treatment

If you choose "Bound" for format field in Bibliographic Data Section:

3. Book fields

A. Description

1. Binding originality

- a. Original
 - b. Repaired
 - c. Rebound
 - d. Rebacked
- 2. Covering style
 - a. Full
 - b. Half
 - c. Quarter
 - d. Cover missing
- 3. Covering material
 - a. Leather: _____
 - b. Tawed skin: _____
 - c. Parchment: _____
 - d. Paper: _____
 - e. Cloth: _____
 - f. Other: _____
- 4. Cover material note: _____
- 5. Paper decoration
 - a. Undecorated
 - b. Marbled
 - c. Printed
 - d. Paste
 - e. Sprinkled
 - f. Other: _____
- 6. Paper decoration note: _____
- 7. Board decoration
 - a. Tooled: _____
 - b. Label: _____
 - c. Panel stamp: _____
 - d. Embossed: _____
 - e. Inlays: _____
 - f. Onlay: _____
- 8. Board material
 - a. Binders board
 - b. Strawboard
 - c. Wood
 - d. Pulp board
 - e. Paper
 - f. Concealed
- 9. Furniture
 - a. Clasp: _____
 - b. Ties: _____

- c. Boss: _____
 - d. Nail: _____
- 10. Furniture note: _____
- 11. Endbands
 - a. Original
 - b. Replaced
 - c. Stuck-on
 - d. Hand-sewn
 - e. Front bead
 - f. Back bead
 - g. Single tiered
 - h. Double tiered
 - i. Herringbone
 - j. Other
- 12. Endbands note: _____
- 13. Spine shape
 - a. Nearly flat (almost no shoulder)
 - b. Moderate round (slight flaring)
 - c. Well rounded (right angle)
 - d. False bands
- 14. Spine lining
 - a. Paper
 - b. Vellum
 - c. Skin
 - d. Overall
 - e. Between sewing stations
 - f. With slotted spine
 - g. Extends onto boards
 - h. Width of spine
 - i. Hollow tube
 - j. Crash/mull
- 15. Spine adhesive
 - a. Starch
 - b. Gelatin
 - c. Synthetic
 - d. Other
- 16. Spine adhesive note: _____
- 17. Joints
 - a. Tight
 - b. Back-cornered
 - c. Groove
- 18. Cover to text attachment

- a. In-boards
- b. Cased
- c. Laced-case
- d. Lapped component
- e. Other

19. Cover to text note: _____

20. Endpapers

- a. Vellum
- b. Plain paper
- c. Marbled
- d. Decorated
- e. Single folio
- f. Double folio
- g. Single leaf
- h. Made-end
- i. Tipped
- j. Hooked
- k. Sewn through fold
- l. With pastedown
- m. Without pastedown
- n. Vellum guard
- o. Paper guard

21. Endpapers note: _____

22. Textblock material

- a. Paper
- b. Parchment
- c. Papyrus
- d. Other

23. Textblock material note: _____

24. Textblock media

- a. Printer's ink
- b. Manuscript ink
- c. Graphite
- d. Colored inks
- e. Pigment/illumination
- f. Other

25. Textblock media note: _____

26. # sewing stations: _____

27. # sewing supports: _____

28. Sewing structure

- a. Linked
- b. Unlinked

- c. Overcast
 - d. All-along
 - e. Two-on
 - f. Three-on
 - g. Stabbed
 - h. Tacketed
 - i. Other
29. Sewing structure note: _____
30. Leaf attachment
- a. Sewn through fold
 - b. Stabbed
 - c. Single leaf/leaves
 - d. Adhesive
 - e. Tacketed
 - f. Stapled
31. Leaf attachment note: _____
32. Current housing
- a. None
 - b. Tuxedo/integument
 - c. Clamshell
 - d. Slipcase
 - e. Other
33. Current housing note: _____

B. Condition

- 1. Cover material
 - a. Detached
 - b. Shrunken
 - c. Deformed
 - d. Areas missing
 - e. Cloth weak
 - f. Abrasion
 - g. Insect damage
 - h. Red rot
 - i. Hinge split/splitting
 - j. Spine detached/detaching
 - k. Fore edge damage
 - l. Corner damage/fraying
 - m. Cap damage
- 2. Cover material note: _____
- 3. Label

- a. Detached
 - b. Missing
 - c. Damaged
- 4. Endbands
 - a. Intact
 - b. Missing
 - c. Fragments
 - d. Other
- 5. Sewing supports
 - a. Intact
 - b. Loose
 - c. Broken
 - d. Absent
 - e. Abraded at hinge
- 6. Sectional sewing
 - a. Intact
 - b. Loose
 - c. Broken
 - d. Absent
- 7. Endpaper damage
 - a. Broken at joint
 - b. Missing
 - c. Torn
 - d. Acidic
 - e. Not original
 - f. Previous repairs
- 8. Textblock damage
 - a. Surface dirt Location: _____
 - b. Brittleness
 - c. Damaging repairs Location: _____
 - d. Stains Location: _____
 - e. Pressure-sensitive tape Location: _____
 - f. Water-based tape Location: _____
 - g. Mold Location: _____
 - h. Foxing Location: _____
 - i. Cockling Location: _____
 - j. Insect damage Location: _____
 - k. Accretions Location: _____
 - l. Minor tears/losses Location: _____
 - m. Major tears/losses Location: _____
 - n. Minor creases/folds Location: _____
 - o. Major creases/folds Location: _____

- p. Extraneous material Location: _____
- 9. Media
 - a. Crackling/flaking Location: _____
 - b. Abrasion Location: _____
 - c. Ink/pigment burn Location: _____
 - d. Strike-through Location: _____
 - e. Fading Location: _____
 - f. Bleeding Location: _____

C. Testing

- 1. Ink:
 - a. Solubility in water: _____
 - b. Solubility in ethanol: _____
 - c. Other: _____
- 2. Adhesive:
 - a. Solubility in water: _____
 - b. Solubility in ethanol: _____
 - c. Solubility in acetone: _____
 - d. Solubility in toluene: _____
 - e. Other: _____
- 3. Paper
 - a. Surface pH: _____
 - b. Lignin: _____

D. Bound treatment proposal

Repair to text

- 1. Disassembly
 - a. Mechanical
 - b. Solvent
- 2. Surface cleaning
 - a. Dry clean
 - b. Brush
 - c. Mold removal
 - d. Accretion removal
- 3. Humidify and/or flatten
 - a. Chamber
 - b. Blotter
 - c. Gore-Tex
 - d. Suction table
- 4. Remove

- a. Old mend(s)
 - b. Bookplate
 - c. Old linings
 - d. Old endpapers
 - e. Tape
 - f. Backing
- 5. Attachment removal
 - a. Mechanical
 - b. Local humidification
 - c. Poultice
 - d. Methylcellulose
 - e. Steam
 - f. Solvent
 - g. Heated air
- 6. Stain reduction
 - a. Water
 - b. Solvents
- 7. Wet treatment
 - a. Wash
 - b. Alkalize
 - c. Size
- 8. Pigment consolidation
 - a. With A4M methylcellulose
 - b. With gelatin
- 9. Mending/lining
 - a. Mend tears
 - b. Fill tears
 - c. Line
 - d. Rehinge

Repair to binding

- 10. Sewing
 - a. Total resew
 - b. Partial resew
- 11. Spine linings
 - a. Reuse old
 - b. New
- 12. Endband style
 - a. Single core
 - b. Double core
 - c. Front bead

- d. Back bead
 - e. Woven
- 13. Endband core
 - a. Linen cord
 - b. Leather/vellum
 - c. Alum tawed
- 14. Endband thread
 - a. Silk
 - b. Linen
- 15. Endband repair
 - a. Resew
 - b. Stuck-on
- 16. Reback
 - a. Cloth
 - b. Paper
 - c. Leather
 - d. Alum tawed
 - e. Vellum
- 17. Endpapers
 - a. Mend
 - b. Reattach
 - c. Replace
- 18. Board reattachment
 - a. Japanese paper
 - b. Cloth
 - c. Thread
 - d. Paper and hollow
- 19. Rebind
 - a. Replace endpapers
 - b. Guard
 - c. Repair original covers
 - d. New case
 - e. New cover boards
- 20. New cover materials
 - a. Cloth
 - b. Leather
 - c. Alum tawed skin
 - d. Vellum
 - e. Paper case paper
 - f. Decorated paper
- 21. Binding refurbishment
 - a. Surface clean

- b. Consolidate cover
- c. Consolidate leather
- d. Mend
- e. Retouch/tone
- f. Endcap repair

22. Estimated treatment time: _____

E. Treatment report

Repair to text

1. Disassembly
 - a. Mechanical separation of textblock
 - b. MC/water solvent separation
 - c. Heated tool
2. Surface cleaning
 - a. Dry clean, vinyl eraser crumbs
 - b. Dry clean, vinyl eraser
 - c. Dry clean, soot sponge / makeup sponge
 - d. Surface dirt removal, brush only
 - e. Mold removal with HEPA vacuum
 - f. Mechanical accretion removal
 - g. Accretion removal with moist swab or methylcellulose
3. Humidification and flattening
 - a. Chamber
 - b. Blotter
 - c. Gore-Tex
 - d. Suction table
 - e. Local humidification to flatten folds, creases
 - f. Overall humidification to encourage planarity
 - g. Pressed between blotter/Reemay under weight
 - h. Pressed between felts/blotter/Reemay
 - i. Pressed in "hard/soft sandwich" (matboard/Pellon)
4. Attachment removal
 - a. Mechanical removal, pins/clips/grommets
 - b. Tape removal, heated spatula
 - c. Tape residue removal, crepe eraser
 - d. Tape residue removal, vinyl eraser
 - e. Tape residue removal, poultice
 - f. Local humidification with water/MC to remove attachment
 - g. Local humidification through blotter to remove attachment
5. Stain reduction

- a. Stain reduction on solvent table, water
 - b. Stain reduction on solvent table, ethanol
 - c. Stain reduction on solvent table, acetone
 - d. Stain reduction on solvent table, ammonium hydroxide
 - e. Stain reduction on solvent table, solvent mixture
6. Wet treatments
- a. Washed, up to three 15 min. baths of neutral calcified purified water
 - b. Washed, up to three 15 min. baths of tap water
 - c. Washed, up to three 15 min. baths of 1:3 ethanol/calcified water
 - d. Washed, up to three 15 min. baths of 1:1 ethanol/calcified water
 - e. Washed, up to three 15 min. baths of 1:1 ethanol/calcified water
 - f. Alkalized in 10 min. calcium hydroxide bath (pH 8)
 - g. Sprayed with Bookkeeper
 - h. Sized with methylcellulose
 - i. Sized with gelatin
 - j. Silicone release paper on wafer seals while drying
7. Pigment consolidation
- a. With A4M methylcellulose
 - b. With gelatin
8. Mending
- a. Mended tears, Japanese paper and wheat starch paste
 - b. Mended tears, lens tissue and wheat starch paste
 - c. Mended tears, heat-set tissue and heat
 - d. Japanese paper fill(s)
 - e. Western paper fill(s)
 - f. Pulp fill on suction table
 - g. Toned mend/fill, acrylics
 - h. Toned mend/fill, watercolor pencil
 - i. Toned mend/fill, watercolors
 - j. Rehinged with Japanese paper and wheat starch paste
 - k. Lined paper overall with Japanese paper/paste
9. Mending note:_____

Repair to binding

- 1. Sewing
 - a. Total resew
 - b. Partial resew
- 2. Sewing note:_____
- 3. Spine linings (check more than one)
 - a. Use old linings
 - b. New linings

- c. Japanese paper/paste
 - d. Airplane linen/paste
 - e. Airplane linen/PVA
 - f. Paper/PVA
 - g. Leather/Lascaux 498HV
 - h. C-cloth/PVA
 - i. Combo
- 4. Endband style
 - a. Single core
 - b. Double core
 - c. Front bead
 - d. Back bead
 - e. Woven
- 5. Endband thread
 - a. Silk
 - b. Linen
- 6. Endband repair
 - a. Repair sewing
 - b. Sew new endband
 - c. Readhere stuck-on
 - d. New stuck-on
- 7. Reback
 - a. Cloth
 - b. Japanese paper
 - c. Western paper
 - d. Leather, goat
 - e. Leather, calf
 - f. Alum tawed, goat
 - g. Alum tawed, pig
 - h. Vellum
- 8. Endpaper
 - a. Mend with paste and tissue
 - b. Reattach with paste and tissue
 - c. Reattach with PVA
 - d. Replace
- 9. Board reattachment
 - a. One board
 - b. Both boards
 - c. Japanese paper under lifted board material and spine material
 - d. Japanese paper internal hinge
 - e. Cloth lining on spine
 - f. Thread tackets

- g. Thread through outer sections onto boards
- h. Japanese paper across spine; paper or cloth over hollow on spine

10. Rebind

- a. Replace endpapers
- b. Guard with Japanese paper/paste
- c. Repair original covers with paste
- d. Repair original covers with PVA
- e. New case
- f. New cover boards

11. New cover materials

- a. Cloth
- b. Leather, goat
- c. Leather, calf
- d. Alum tawed, goat
- e. Alum tawed, pig
- f. Vellum, goat
- g. Vellum, calf
- h. Paper case paper
- i. Decorated paper

12. Binding refurbishment

- a. Surface clean with vinyl erasers
- b. Consolidate with paste
- c. Consolidate with PVA
- d. Consolidate with Lascaux 498HV
- e. Apply Klucel G
- f. Apply SC6000
- g. Apply microcrystalline wax
- h. Mend with Japanese paper
- i. Retouch fills with acrylics
- j. Retouch fills with watercolor
- k. Repaired endcap with paste
- l. Repaired endcap with PVA
- m. New label

13. Housing

- a. Wrapper or envelope
- b. Tuxedo box
- c. Corrugated clamshell
- d. Cloth clamshell
- e. Existing enclosure reused
- f. Dust jacket, Mylar
- g. Dust jacket, polyethylene
- h. Encapsulation

- i. Portfolio
- 14. Materials notes: _____
- 15. Actual treatment time: _____

If you choose "Flat" for format field in Bibliographic Data Section:

4. Flat Paper Fields

Description

- 1. Support Substance
 - a. Paper (handmade)
 - b. Paper (mould-made)
 - c. Paper (machine-made)
 - d. Parchment
 - e. Synthetic material
 - f. Other
- 2. Other material: _____
- 3. Watermark [check box for yes] Description: _____
- 4. Media
 - a. Printer's ink
 - b. Manuscript ink
 - c. Graphite
 - d. Pastel/charcoal
 - e. Paint
- 5. Current housing
 - a. Frame
 - b. Case/box
 - c. Mat
 - d. Backing
 - e. Surface film/glazing
 - f. Tape encapsulation
 - g. Welded encapsulation
 - h. Folder

Condition

- 10. Support (paper)
 - a. Acidic/brittle [check boxes in this section]
 - b. Soft
 - c. Surface dirt Location: _____

- d. Minor tears/losses Location: _____
 - e. Major tears/losses Location: _____
 - f. Creases/folds Location: _____
 - g. Cockling Location: _____
 - h. Staining/discoloration Location: _____
 - i. Mat burn Location: _____
 - j. Foxing Location: _____
 - k. Insect/pest damage Location: _____
 - l. Mold damage Location: _____
 - m. Accretions Location: _____
11. Attachments to support
- a. Water-sensitive tape Location: _____
 - b. Pressure-sensitive tape Location: _____
 - c. Adhesive residue Location: _____
 - d. Damaging repair Location: _____
 - e. Damaging mat/attached housing Location: _____
 - f. Pins/clips/grommets Location: _____
 - g. Seal
 - i. Wafer
 - ii. Wax
 - iii. Embossed
12. Media
- a. Crackling/flaking Location: _____
 - b. Abrasion Location: _____
 - c. Ink/pigment burn Location: _____
 - d. Strike-through Location: _____
 - e. Fading Location: _____
 - f. Bleeding Location: _____

Testing

- 1. Ink:
 - d. Solubility in water: _____
 - e. Solubility in ethanol: _____
 - f. Other: _____
- 2. Adhesive:
 - f. Solubility in water: _____
 - g. Solubility in ethanol: _____
 - h. Solubility in acetone: _____
 - i. Solubility in toluene: _____
 - j. Other: _____
- 3. Paper

- a. Surface pH: _____
- b. Lignin: _____

Treatment proposal

- 23. Surface cleaning
 - a. Dry clean
 - b. Brush
 - c. Mold removal
 - d. Accretion removal
- 24. Attachment removal
 - a. Tape removal
 - b. Local humidification
 - c. Backing removal
 - d. Disassemble/dismount
- 25. Attachment removal
 - a. Tape removal
 - b. Local humidification
 - c. Backing removal
 - d. Disassemble/dismount
- 26. Stain reduction
 - a. Water
 - b. Solvents
- 27. Wet treatment
 - a. Wash
 - b. Alkalize
 - c. Size
- 28. Pigment consolidation
 - a. With methylcellulose
 - b. With gelatin
- 29. Mending/lining
 - a. Mend tears
 - b. Fill tears
 - c. Line
 - d. Rehinge
- 30. House
 - a. Paper
 - b. Mylar
 - c. Mat
 - d. Interleave
 - e. Custom
- 31. Estimated time: _____

Treatment report

10. Surface cleaning

- a. Dry clean, vinyl eraser crumbs
- b. Dry clean, vinyl eraser
- c. Dry clean, crepe eraser
- d. Surface dirt removal, brush only
- e. Mold removal with HEPA vacuum
- f. Mechanical accretion removal
- g. Accretion removal with moist swab or methylcellulose

11. Attachment removal

- a. Tape removal, heated spatula
- b. Tape residue removal, crepe eraser
- c. Tape residue removal, vinyl eraser
- d. Local humidification with water/MC to remove attachment
- e. Local humidification through blotter to remove attachment
- f. Mechanical removal, pins/clips/grommets
- g. Backing removal, mechanical
- h. Backing removal, water or methylcellulose
- i. Disassemble/dismount, mechanically

12. Stain reduction

- a. Stain reduction on solvent table, water
- b. Stain reduction on solvent table, ethanol
- c. Stain reduction on solvent table, acetone
- d. Stain reduction on solvent table, ammonium hydroxide
- e. Stain reduction on solvent table, solvent mixture

13. Wet treatments

- a. Washed, up to three 15 min. baths of neutral calcified purified water
- b. Washed, up to three 15 min. baths of tap water
- c. Washed, up to three 15 min. baths of 1:3 ethanol/calcified water
- d. Washed, up to three 15 min. baths of 1:1 ethanol/calcified water
- e. Washed, up to three 15 min. baths of 1:1 ethanol/calcified water
- f. Alkalized in 10 min. calcium hydroxide bath (pH 8)
- g. Sprayed with Bookkeeper
- h. Sized with methylcellulose
- i. Sized with gelatin

14. Humidification and flattening

- a. Local humidification to flatten folds, creases
- b. Overall humidification to encourage planarity
- c. Pressed between blotter/Reemay under weight
- d. Pressed between felts/blotter/Reemay
- e. Silicone release paper on wafer seals while drying

15. Consolidation

- a. With 5% A4M methycellulose
- b. With 5% gelatin

16. Mending/lining

- a. Lined overall, Japanese paper and wheat starch paste
- b. Mended tears, Japanese paper and wheat starch paste
- c. Mended tears, lens tissue and wheat starch paste
- d. Mended tears, heat-set tissue and heat
- e. Toned mend/fill, acrylics
- f. Toned mend/fill, Derwent watercolor pencil
- g. Toned mend/fill, watercolors
- h. Japanese paper fill(s)
- i. Western paper fill(s)
- j. Pulp fill on suction table
- k. Rehinged

17. Housing

- a. Alkaline paper folder
- b. Envelope
- c. Mylar L-sleeve
- d. Mylar encapsulation
- e. Matted
- f. Interleave with tissue
- g. Interleave with silicone release paper
- h. Custom enclosure
- i. Reuse existing enclosure

18. Actual time:_____

University of Kansas Libraries Book Treatment Report

ID	349	Collection	Special Collections
Aeon Number	83235	Curator	Healey, Elspeth
Treatment ID	61-2020	Conservator	Whitney Baker
Title	Strangers and pilgrims: a novel	Date Examined	12/16/2020
Author	Braddon, Mary Elizabeth	Date In	12/16/2020
Call Number	B1315	Date Out	1/20/2021
Barcode	33838400067246	Selection Method	Intern project (finishing up)
Production Date		Priority	High
Item Height (cm)	18.5	Photodocumentation	G drive
Item Width (cm)	12.5	Estimated treatment	Japanese paper along inner joint, as necessary. Consolidate covers. Reattach loose pieces of spine. Mylar jacket.
Item Thickness (mm)	3	Actual Treatment	Readhered original spine lining with PVA-- picture for file. Sakamoto 1-on, 2-off hollow, with wheat starch paste. Reattached spine piece with PVA. Board edges consolidated. Mylar jacket.
Substrate Thickness (mm)			
Format	Bound		
Accompanying			

Description

Binding Originality	Original	Joints	Groove
Covering Style	Full	Cover to text attachment	Cased
Covering material	Paper	Cover to text note	
Cover material note		Endpapers	Plain paper, Single folio, Tipped
Paper decoration	Printed	Endpapers note	
Paper decoration note		Textblock material	Paper
Board decoration		Textblock material note	
Board decoration note		Textblock media	Printer's ink
Board Material	Pulp board	Textblock media note	
Furniture		# sewing stations	0
Furniture note	N/A	# sewing supports	0
Endbands		Sewing structure	Other

Endbands note	N/A
Spine shape	Moderate round (slight flaring)
Spine Lining	Crash/mull, Paper
Spine adhesive	
Spine adhesive note	

Sewing structure note	
Leaf attachment	Stapled
Leaf attachment note	
Current housing	None
Current housing note	

Condition

Cover material	Abrasion, Corner damage, Spine detached/detaching
Cover material note	
Label	
Endbands	
Sewing Supports	
Sectional Sewing	
Endpaper Damage	

Media

Cracking/flaking	<input type="checkbox"/> Location:	
Abrasion	<input type="checkbox"/> Location:	
Ink/pigment burn	<input type="checkbox"/> Location:	
Strike-through	<input type="checkbox"/> Location:	
Fading	<input type="checkbox"/> Location:	
Bleeding	<input type="checkbox"/> Location:	

Textblock Damage

Surface Dirt	<input type="checkbox"/> Location:	
Brittleness	<input type="checkbox"/>	
Damaing Repairs	<input type="checkbox"/> Location:	
Stains	<input type="checkbox"/> Location:	
Pressure-sensitive tape	<input type="checkbox"/> Location:	
Water-based tape	<input type="checkbox"/> Location	
Mold	<input type="checkbox"/> Location:	
Cockling	<input type="checkbox"/> Location:	
Foxing	<input type="checkbox"/> Location:	
Insect Damage	<input type="checkbox"/> Location:	
Accretions	<input type="checkbox"/> Location:	
Minor tears/losses	<input type="checkbox"/> Location:	
Major tears/losses	<input type="checkbox"/> Location:	
Minor creases/folds	<input type="checkbox"/> Location:	
Major creases/folds	<input type="checkbox"/> Location:	
Extraneous material	<input type="checkbox"/> Location:	

Testing

Ink:	
Solubility in water:	
Solubility in ethanol:	
Other:	
Adhesive:	
Solubility in water:	
Solubility in ethanol:	
Solubility in acetone:	
Solubility in toluene:	
Other:	
Paper:	
Surface pH:	
Lignin:	

Treatment Proposal

Repair to text

Disassembly	
Surface cleaning	
Humidify and/or flatten	
Remove	
Attachment removal	
Stain reduction	
Wet treatment	
Pigment consolidation	
Mending/lining	

Repair to binding

Sewing	
Spine linings	Reuse Old
Endband style	
Endband core	
Endband thread	
Endband repair	
Reback	
Endpapers	
Board reattachment	Japanese paper
Rebind	
New cover materials	
Binding refurbishment	Mend
Housing	Dust jacket, Mylar

Estimated treatment time 20 minutes

Treatment Report

Repair to text

Disassembly	
Surface cleaning	
Humidification and flattening	
Remove	
Attachment removal	
Stain reduction	
Wet treatments	
Pigment consolidation	
Mending	

Mending note

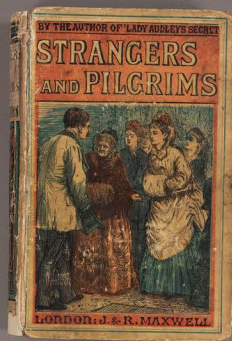
Repair to binding

Sewing	
Sewing note	
Spine linings	Japanese paper/paste, Use old linings
Endband style	
Endband core	
Endband thread	
Endband repair	
Reback	Japanese paper
Endpaper	
Board reattachment	
Rebind	
New cover materials	
Binding refurbishment	

Housing Dust jacket, Mylar

Materials notes Consolidated board edges with paste.

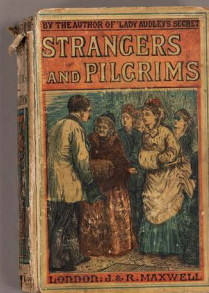
Actual treatment time 24 minutes



AFTER TREATMENT

61-2620

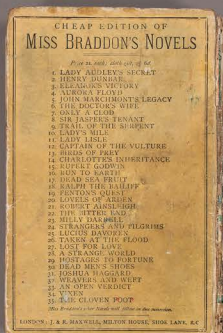
S_2020_61_1_AT.TIF



BEFORE TREATMENT

61-2620

S_2020_61_1_BT.TIF



AFTER TREATMENT

61-2620

S_2020_61_2_AT.TIF



BEFORE TREATMENT

61-2620

S_2020_61_2_BT.TIF



AFTER TREATMENT

61-2620

S_2020_61_3_AT.TIF



BEFORE TREATMENT

61-2620

S_2020_61_3_BT.TIF